



Optimization

Upgrades for Rosenmund Side Discharge Filters and Filter Dryers

Volume Number 4-1

Shaft Bellows Assembly Upgrades

Welded Flanges

Change the lower internal bellows flange connection from a bolt on design to a welded design.

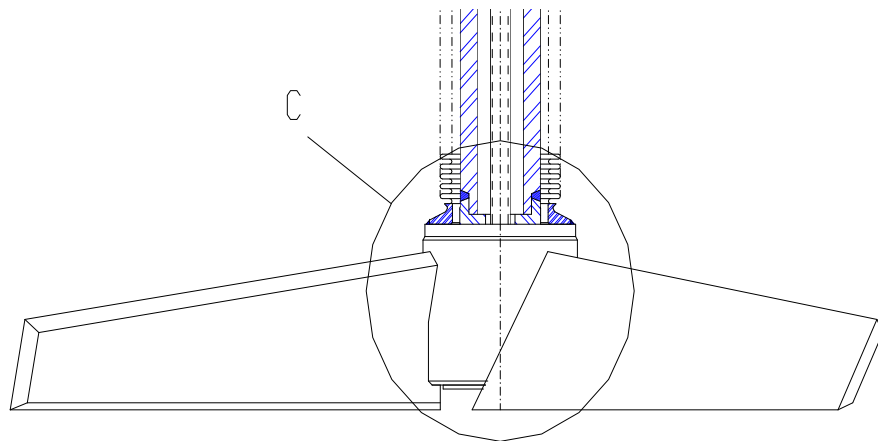
Eliminates potential leakage path from original O-ring design.

Do away with bolts and locking tabs in the product area.

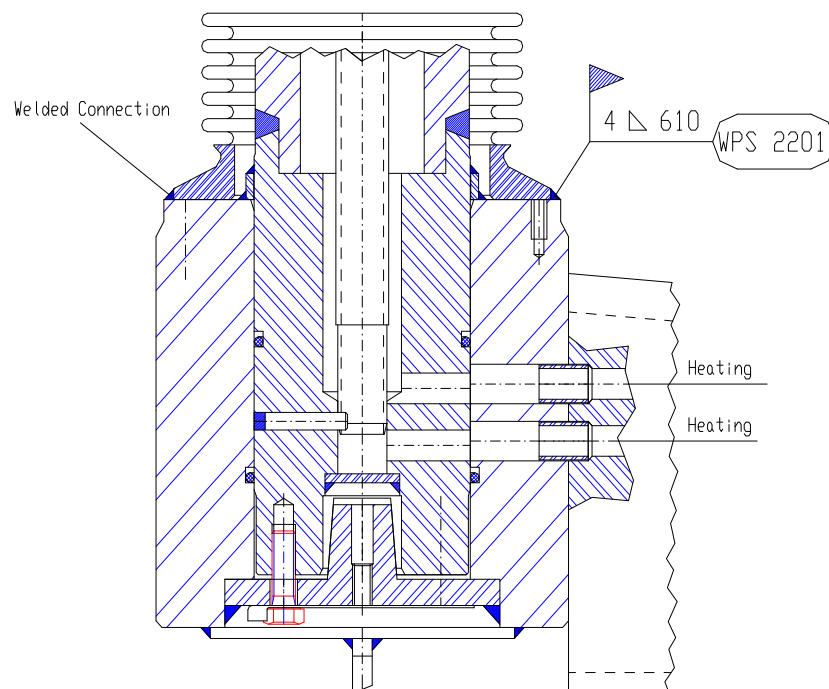
Easier to clean.

Reduce the chance of product contamination.

Records indicate that Rosenmund convoluted bellows last ten years or more.



DETAIL C

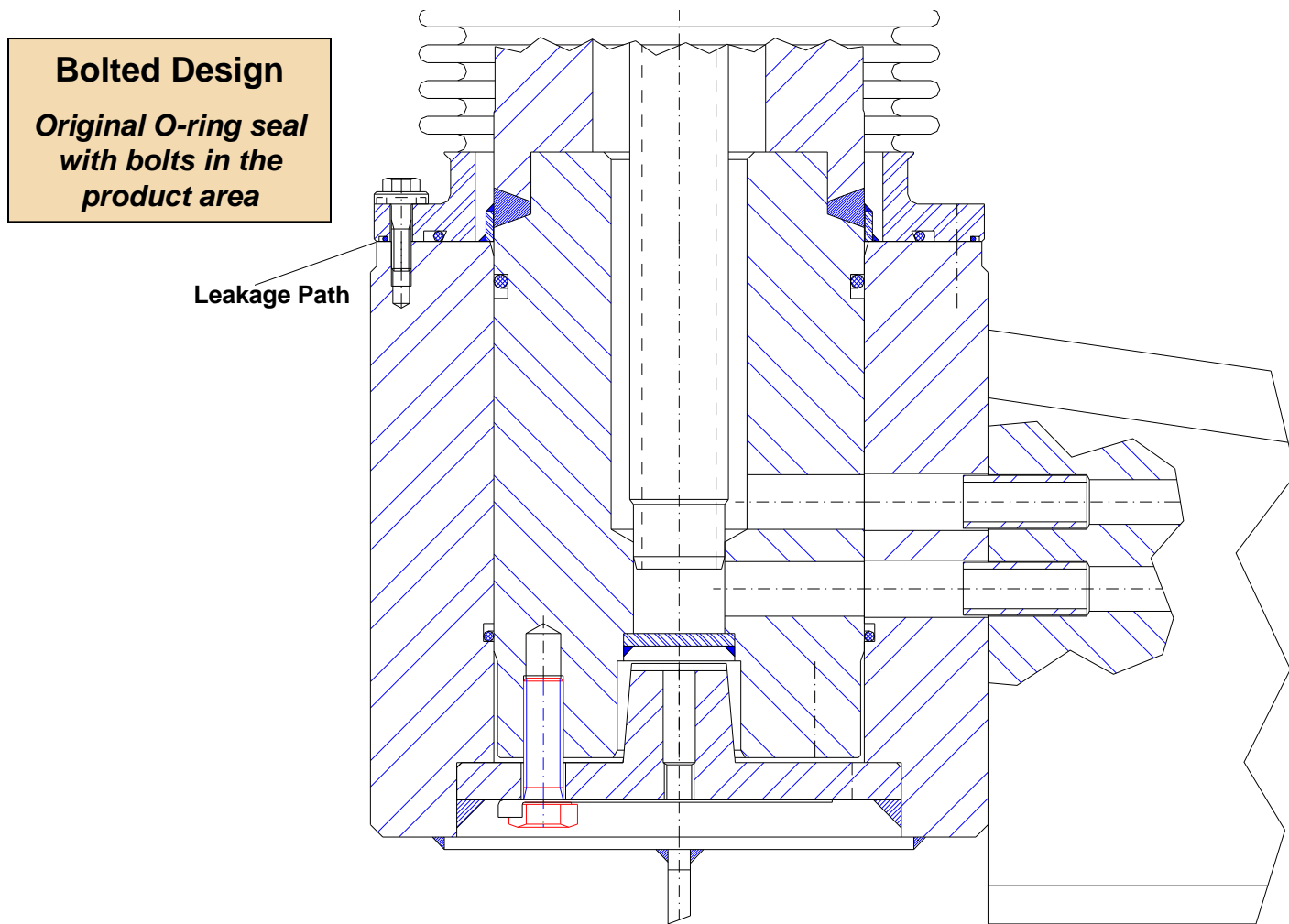


A6.200.3 9/08



spare parts &
support services

Optimization Shaft Bellows Assembly Upgrades



Copyright © De Dietrich Process Systems, Inc. All rights reserved.

244 SHEFFIELD STREET
MOUNTAINSIDE NJ 07092
FAX 908-889-4960

908-317-2585
WWW.DDPSINC.COM
EMAIL SALES@DDPSINC.COM

9110 FORSYTH PARK DRIVE
CHARLOTTE NC 28273
FAX 908-889 4960



The information contained in this brochure is believed to be reliable general guidelines for consideration of the products and services described herein. The information is general in nature and should not be considered applicable to any specific process or application. De Dietrich Process Systems, Inc. expressly disclaims any warranty, expressed or implied of fitness for any specific purpose in connection with the information contained herein.