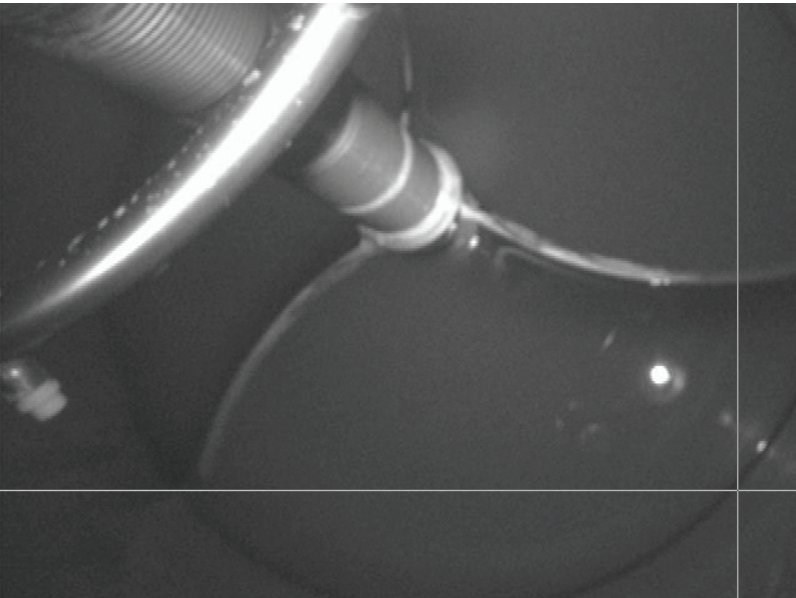


# Non-Contact Liquid Level Detection



**Safety is a Primary Concern: DDPS Camera Systems feature a fused glass seal standard with every model. This unique seal provides an impenetrable safety barrier to protect the camera electronics from the harsh process environment.**

## CASE STUDY

### Problem:

An adhesives company had a costly problem with one of its products with regard to process level control. Due to the viscous, sticky nature and foaming of the product, it coated floats and probes, rendering those types of process level control instruments ineffective. DP and ultrasonic devices would not operate during foaming conditions internally. Nuclear devices were not an attractive alternative due to their regulatory and safety concerns. Operators controlled the process by observing the reactor level out in the plant at various times. This type of control proved grossly inefficient and severely limited process output.

### Solution:

Installation of a vision system with jet spray ring through an existing nozzle provides operators with a continual view of the process from the control room, allowing them to make process decisions and observations at any time during the batch. Subsequent addition of a vector system provides for continuous process level and foam detection which leads to increased process output and efficiency.

## FEATURES

- FM, CSA and approvals to CENELEC on various models. Worldwide approval!
- Standard Flange Pressure 150 PSI, 300 PSI up to ratings of 10,000 PSI models are available
- 450°F Standard Capabilities (up to 2000°F models available)
- 2" NPT, 2" flange and larger, 2" TriClamp® and larger connections are available
- Ethernet color high resolution CCD camera includes imaging software
- Remotely view your process from the comforts of a control room
- Single nozzle viewing/illuminating (with light)
- Spray rings are available to keep your window clean

## APPLICATIONS

- Polymers - Level & Verify Empty
- Crystallizers - Liquid & Foam Level
- Fermentors - Liquid & Foam Level
- High Purity Pharmaceutical - Level & Verify Empty
- Biotech - Level & Verify Empty
- Foam & Fluid Level Monitoring in:
  - Shredders
  - Hoppers
  - Nutsche Filters
  - Latex Applications
  - Strippers
  - Pressure Vessels

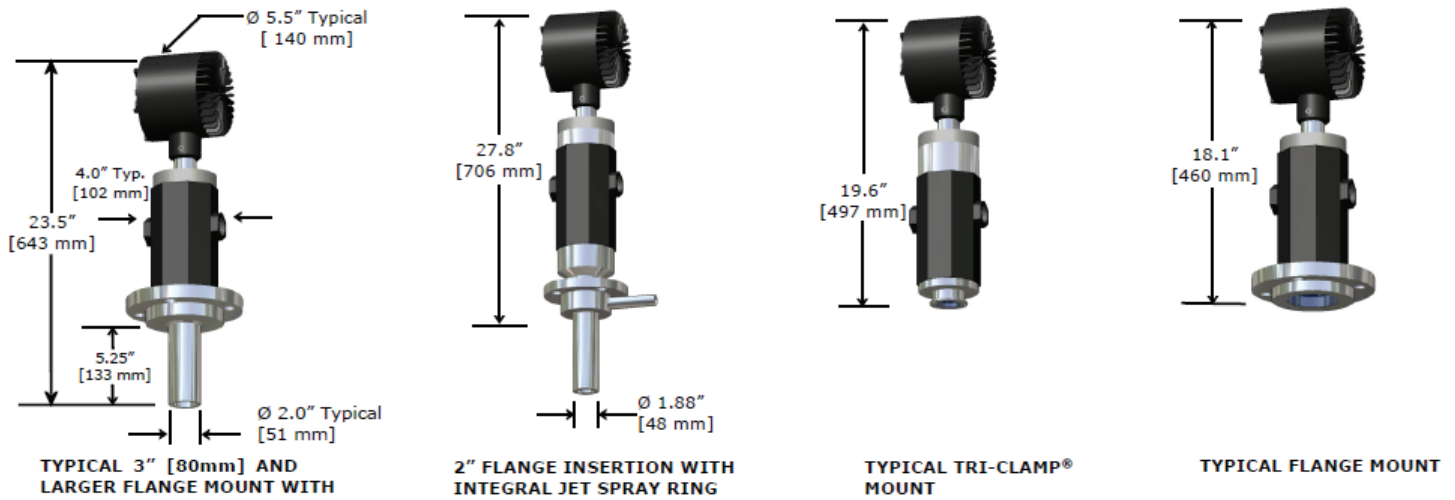
## SPECIFICATIONS

- Video Formats: Ethernet outputs, NTSC, or PAL available  
 Video Output: Ethernet output to PC available or 1.0 V p-p, 75 ohm (NTSC, PAL models)  
 Cable: RG59/U, RG11/U, RG6/U coaxial cable suitable for CCTV applications is recommended for analog cameras. Ethernet cameras require CAT6 or better cabling.  
 Power Req: User supplies 120 VAC, 60 Hz or 230 VAC, 50 Hz power. DDPS supplies transformer to 12 VDC, .5A Typ.  
 Ratings: Available in NEMA 4x or IP66 enclosures  
 Requirements: Electronics housing-supply 90 PSI, 8 SCFM clean, dry instrument air.  
 Insertion lens - may require 13 SCFM clean, dry gas depending on application.

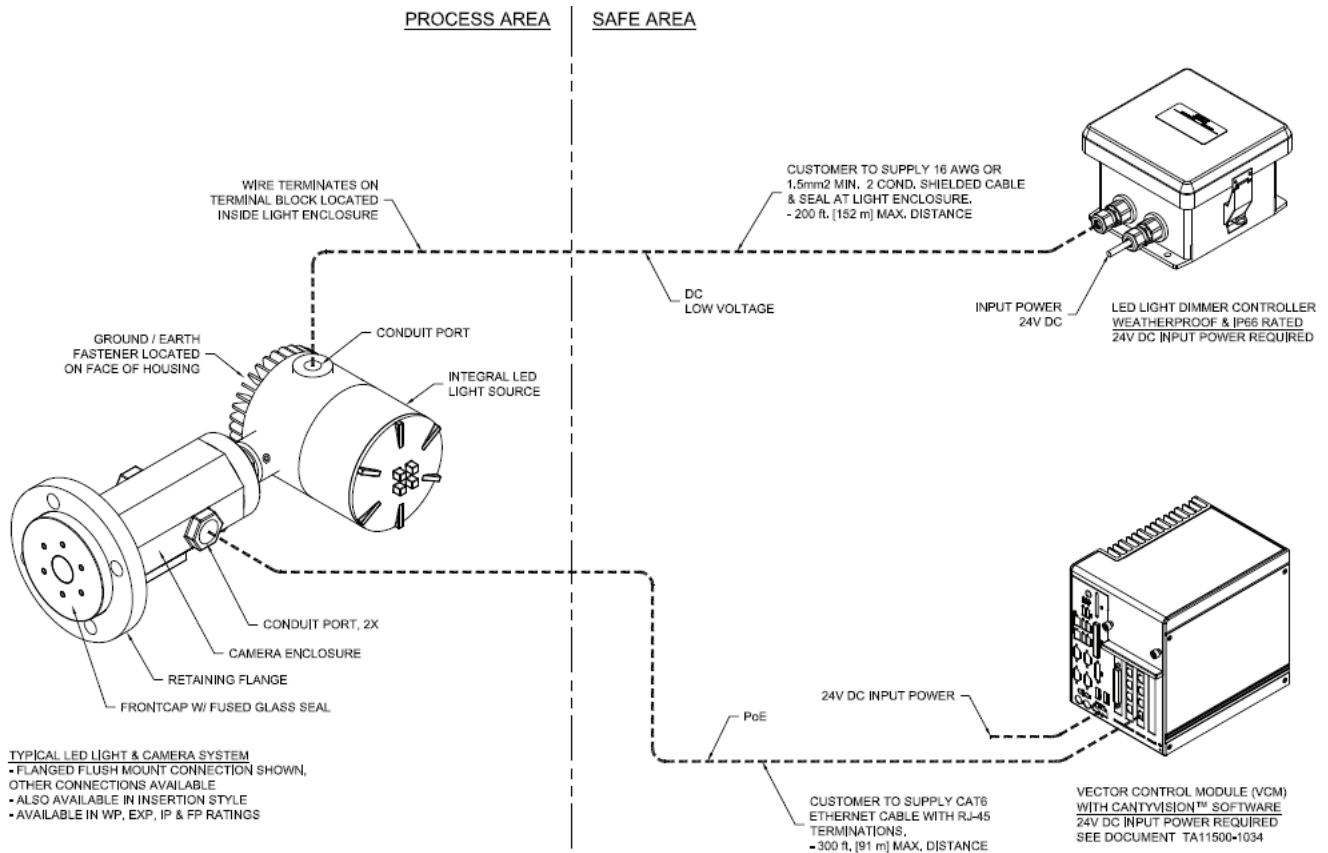


**VISIT [www.ddpsinc.com](http://www.ddpsinc.com)**  
**CALL 908.317.2585**  
**EMAIL [sales@ddpsinc.com](mailto:sales@ddpsinc.com)**

# Dimensional Information and Typical System Layout



Note: For cameras only (no light) subtract 8.25" from O.A.L. of camera/light combos shown above



De Dietrich Process Systems, Inc.

244 Sheffield Street  
Mountainside, NJ 07092

P 908.317.2585  
F 908.889.4960

www.ddpsinc.com  
sales@ddpsinc.com